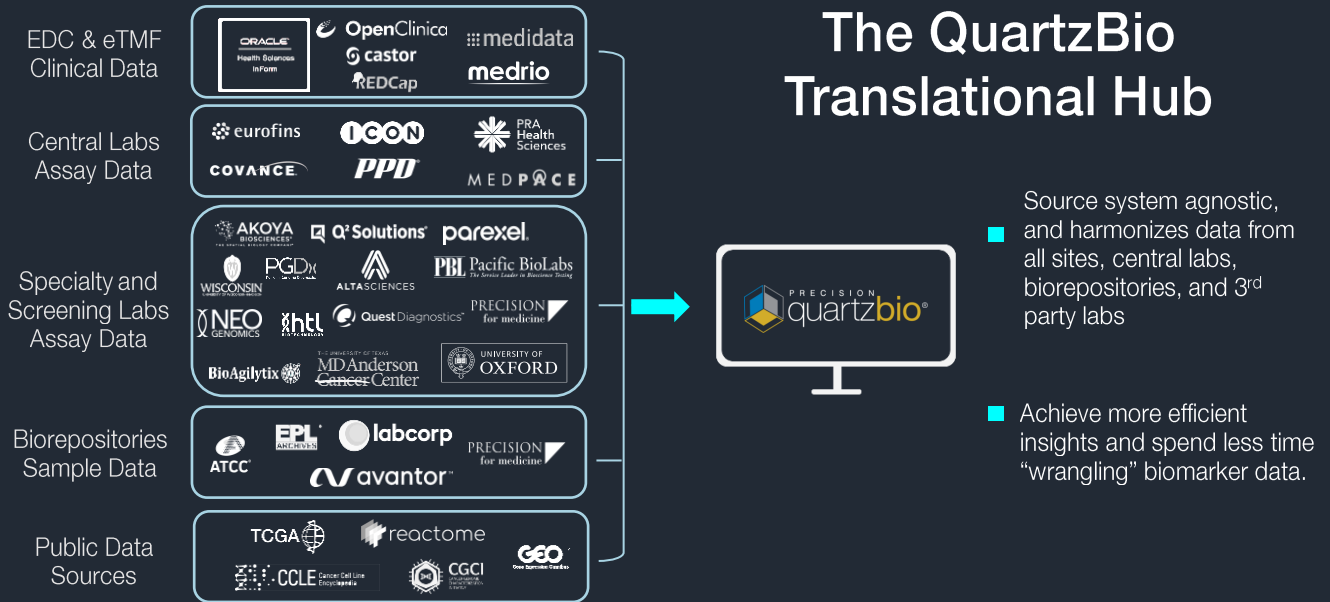


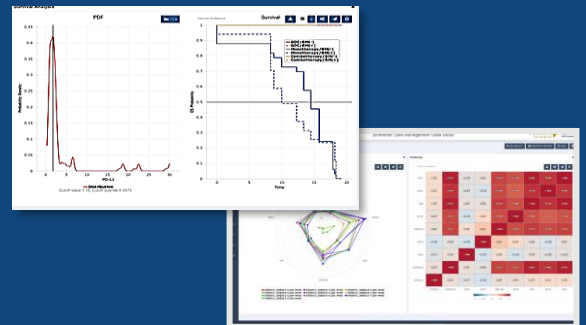
Turn Biomarker Data Chaos into Insights

Integrating data from exploratory biomarker, PK, and clinical data sources in a translational hub enables teams to interrogate trends and reach insights faster. QuartzBio centralizes biomarker and clinical data in a powerful platform to enable scientific insights from a single source of truth.



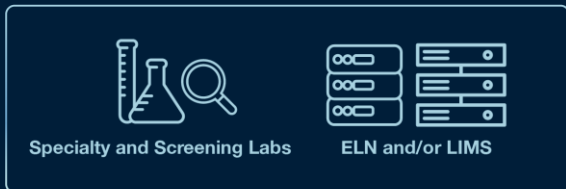
Designed for Translational Exploration & Collaboration

- Navigate vast exploratory data in a platform built to accommodate any assay, including transcriptomics, genomics, proteomics, flow cytometry, and imaging.
- Analyze and explore biomarker trends across subject IDs, time points, response status, and treatment groups.
- Interrogate data via web-based point-and-click user interface designed for no code analytics, or connect to raw and processed data via API.



Step Up From Manual Data Wrangling to virtual Sample Inventory Management

Centralized visibility into sample collection, processing, and storage status across siloed source systems



QuartzBio creates a sole source of truth by consolidating sample inventory and status reports across sites, central labs, vendors, and biorepositories.

Dynamic dashboards report KPIs to enhance on-study visibility for stakeholders in translational science, clinical operations, and data management.

- Compare planned vs actual sample collection; access sample location and status
- Evaluate performance and monitor site-level QC metrics, elevating issues for course correction
- Detect discrepancies early by comparing the study protocol to reported inventories
- Gain forward-looking visibility into expected sample collection

Learn how QuartzBio is using technology-driven solutions to provide visibility into sample availability and quality for clinical and translational teams.

Built on a foundation of experience & evidence

200+ Active Clinical Studies

1000s Biomarker Data Sets

START A CONVERSATION >>